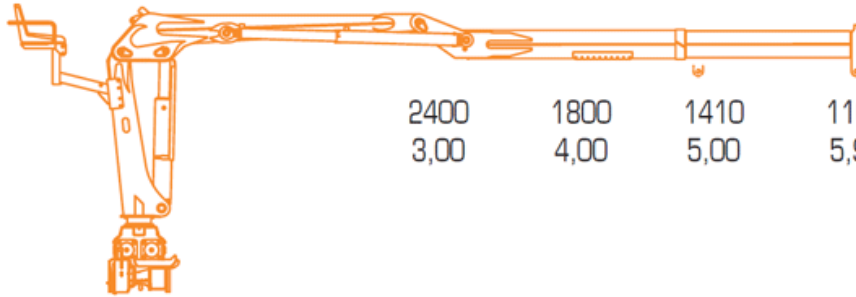




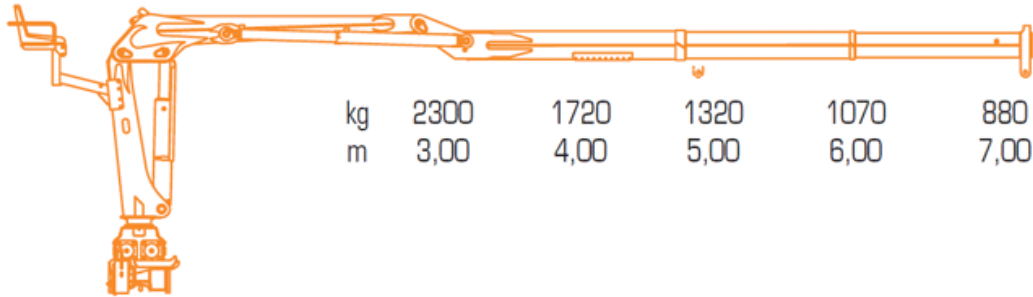
FS 74.Z1



5290 3970 3110 2560 lbs
9'10" 13'1" 16'5" 19'4" ft









2400 1800 1410 1160 kg
3,00 4,00 5,00 5,90 m


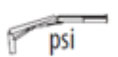






FS 74.Z2



lbs 5070 3790 2910 2360 1940
ft 9'10" 13'1" 16'5" 19'8" 22'12"

kg 2300 1720 1320 1070 880
m 3,00 4,00 5,00 6,00 7,00

METRICO	 kN.m ↑	 bar	 l/min.				 min. t	
FS 74.Z1	70	220	50	1410	400	2272x933x2600	12	4100
FS 74.Z2	60,9	220	50	1490	400	2272x933x2600	12	4100

IMPERIAL	 lbs ↑	 psi	 gpm			 ft/inch	 min. lbs	 ft/inch
FS 74.Z1	506	3190	13,1	3110	400	7'5"x3'1"x8'6"	26460	13'5"
FS 74.Z2	499	3190	13,1	3280	400	7'5"x3'1"x8'6"	26460	13'5"



OLEODINAMICA 
VACCARI

ALLESTIMENTI A NORMA CE
VENDITA - MONTAGGIO E ASSISTENZA GRU
RIPARAZIONI IMPIANTI OLEODINAMICI